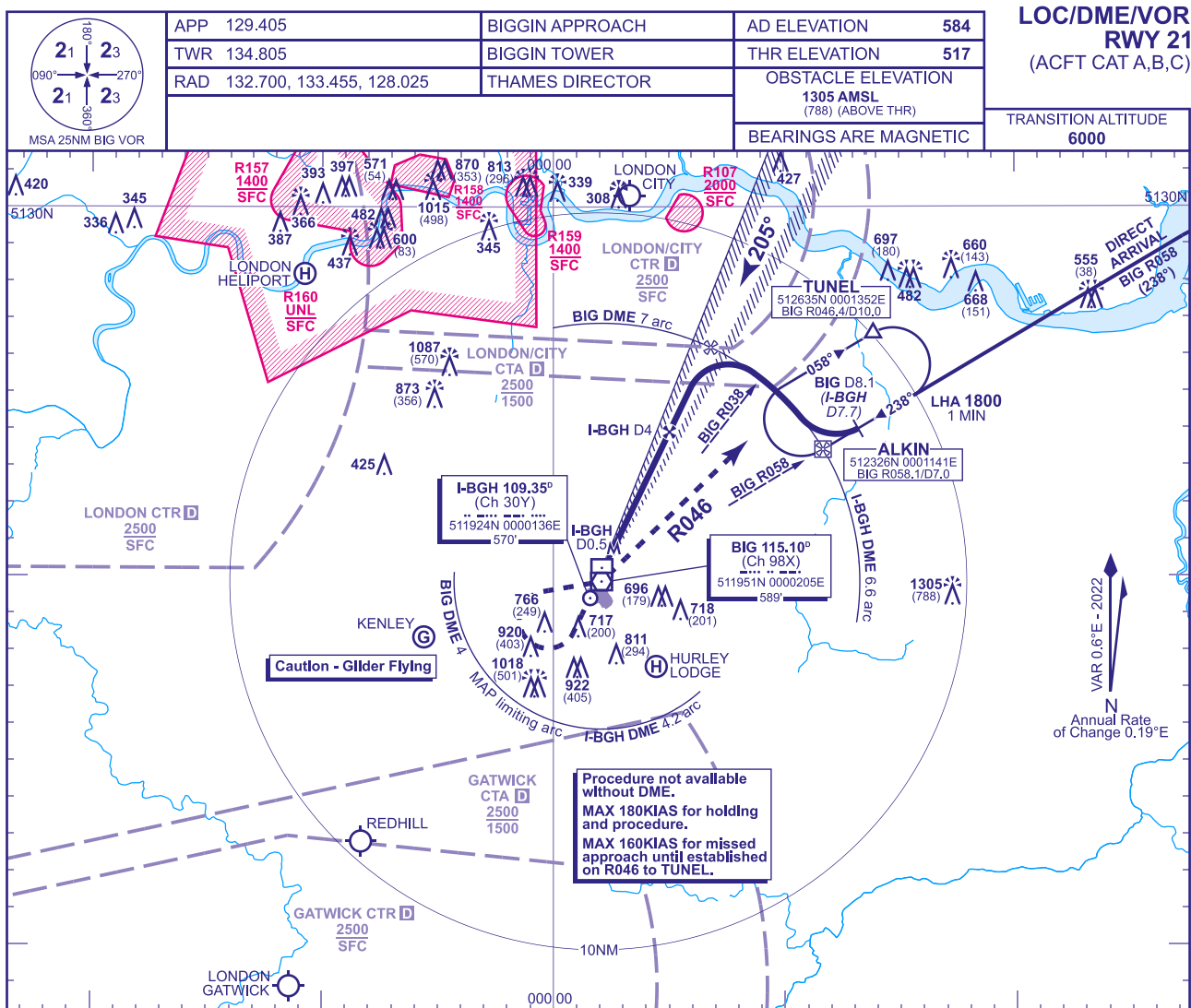
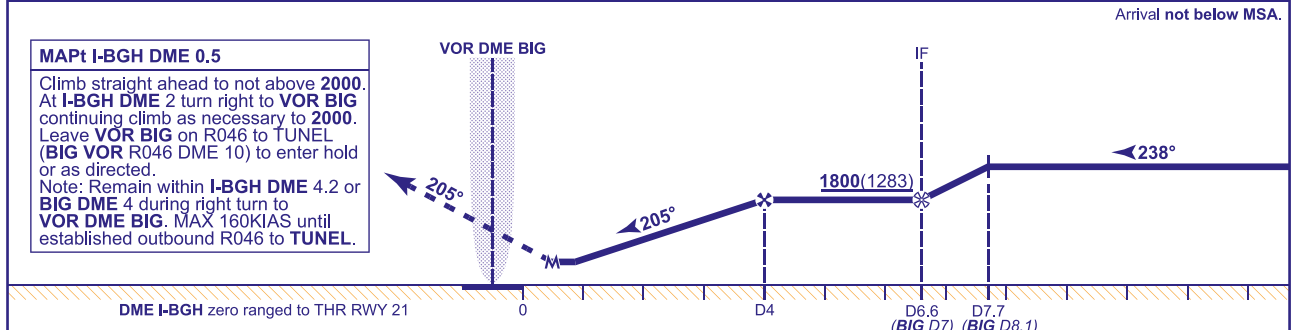


INSTRUMENT APPROACH CHART - ICAO

BIGGIN HILL
LOC/DME/VOR
RWY 21
(ACFT CAT A,B,C)

RECOMMENDED PROFILE Gradient 5.24%, 318FT/NM			
DME I-BGH	3	2	1
ALT(HGT)	1520(1003)	1200(683)	890(373)



Aircraft Category				Rate of descent	G/S KT	160	140	120	100	80
OCA (OCH)	Procedure	860(343)	860(343)	860(343)	FT/MIN	850	740	640	530	420
VM(C)OCA (OCH AAL)	Total Area	1150(566)	1350(766)	1450(866)						

- NOTE
- Initial arc track at BIG R058 is 328°M, Final arc track at BIG R038 is 308°M. Rate of change of arc track 8.2°/NM.
 - Procedural arrivals not normally permitted when 'Thames Director' is available.
 - Aircraft will normally be radar vectored by 'Thames Director' direct to final approach at 1800, to be established not later than I-BGH DME 5.
 - Aircraft which need to lose significant altitude shuttle in ALKIN hold as directed by ATC.
 - ATC will normally require aircraft to hold **not below 2000**. MAX 180KIAS for holding.

CHANGE (2/26): OCA(OCH) MINIMA REVISED.

AERO INFO DATE 17 NOV 25

AD 2-EGKB-8-2